



CAT5E UTP PATCH PANE

About This Guide

This guide contains step-by-step instructions for setting up your unshielded patch panel. Please note that the model you have purchased may appear slightly different from those shown in the illustrations.

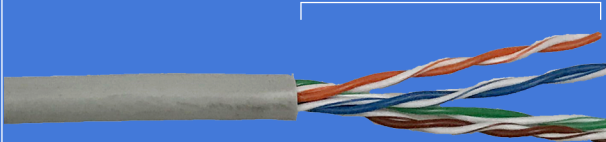
Color Coding Information

A		B	
Pin1	White/Green	Pin1	White/Orange
Pin2	Green	Pin2	Orange
Pin3	White/Orange	Pin3	White/Green
Pin4	Blue	Pin4	Blue
Pin5	White/Blue	Pin5	White/Blue
Pin6	Orange	Pin6	Green
Pin7	White/Brown	Pin7	White/Brown
Pin8	Brown	Pin8	Brown

TABLE 1. WIRE COLOR CODE

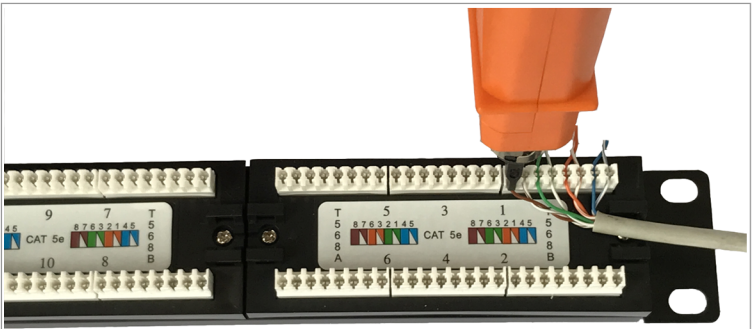
Installation

Cable Wiring

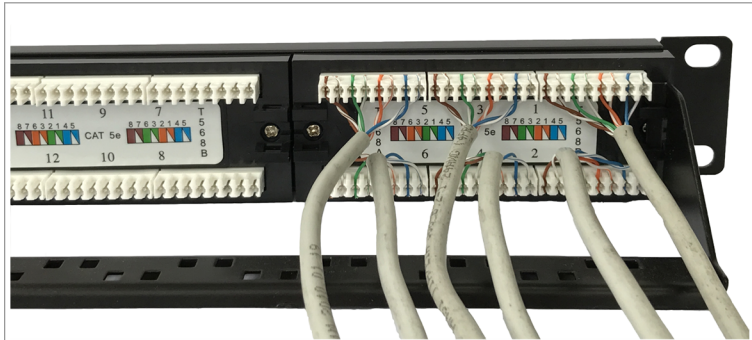


A To connect cable to the unshielded patch Panel, first take the end of the cable wiring and strip approximately 30 mm of the cable jacket.

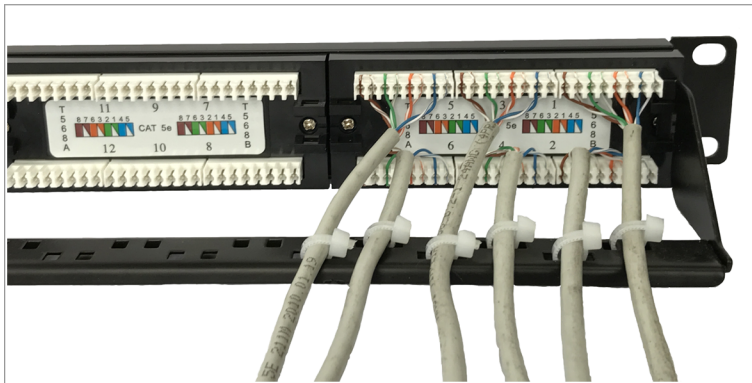
B Following the IDC color code for T568A or T568B wiring (Table 1), separate the wires into 4 pairs.



Use an impact tool to punch in the wires and connect them into the IDC connector on the back of the panel



Lock the support bar onto the rear of the panel



Secure the cables tightly on the support bar